

Flooding in Silicon Valley

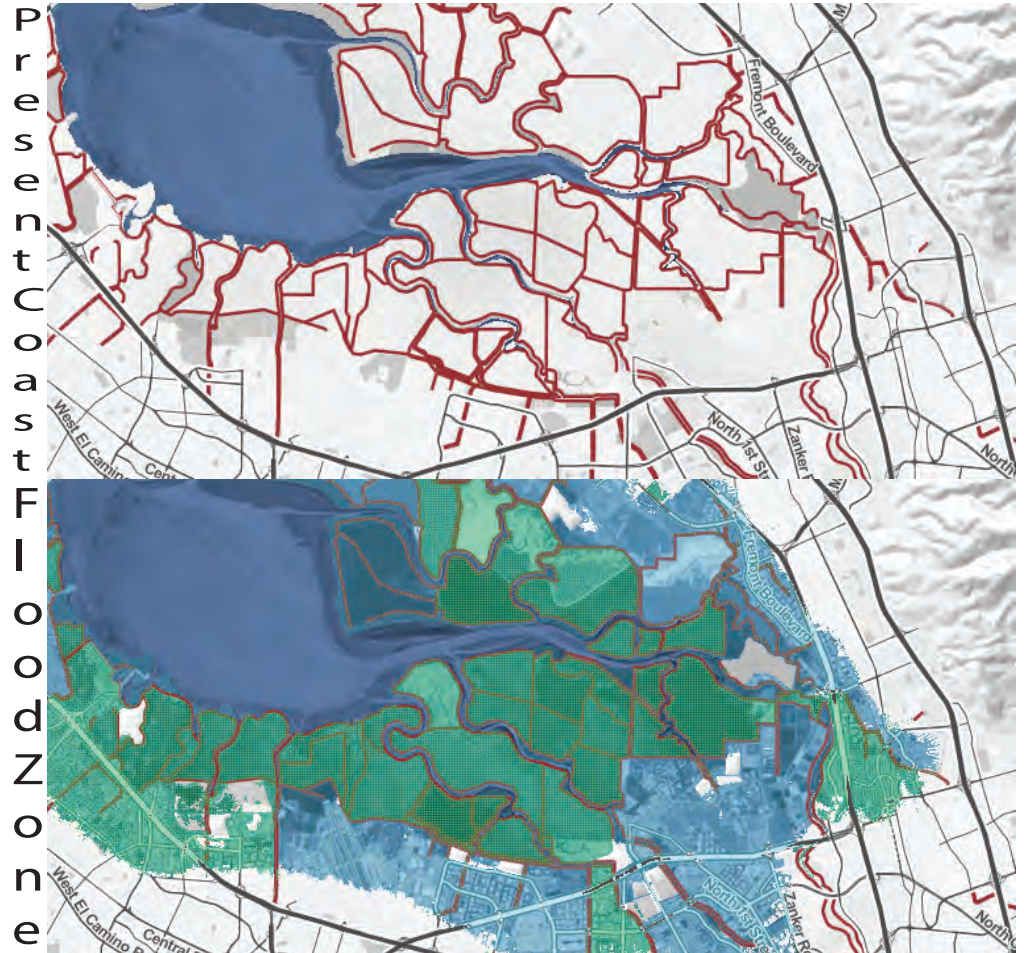
Projected flood zone
rise by 3 meters in
Santa Clara County

WHAT IS BEING DONE?

November 2012 Measure B funding created the Safe, Clean Water and Natural Flood Protection Program. Priority E is to provide flood protection to homes, business, schools and highways.

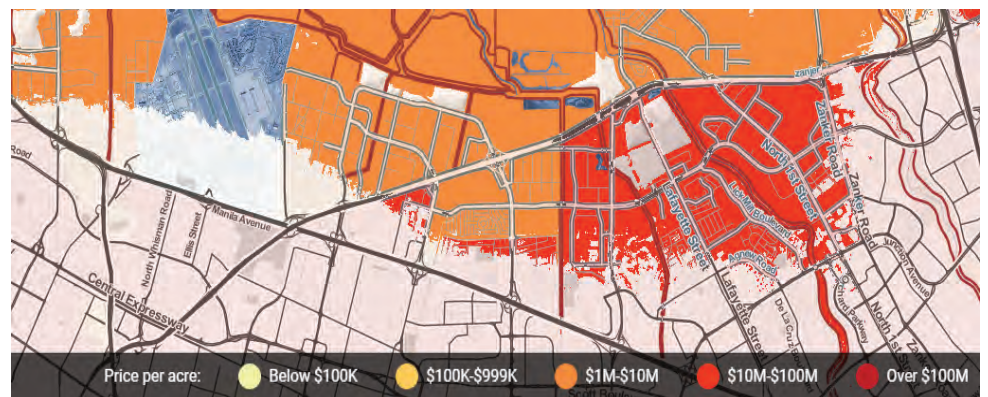
In Santa Clara County, Priority E7 focuses on the San Francisco Bay Shoreline Protection for Economic Impact Area 11, the urban area of North San Jose and Alviso by protecting and reinvigorating tidal marshes.

Tidal Marshes (Horizontal Levees)
Absorb energy of waves
Traps sediment for plant growth
These attributes of tidal marshes allow for strong protection from flooding.



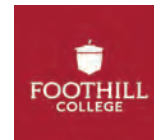
Really bad case scenario

Economic Impacts



If the tidal marshes are not restored to their maximum potential, north Mountain View, Sunnyvale, Santa Clara, and San Jose will all be affected.

These areas are primarily high-tech offices for companies such as Google and Marvell. Foothill's new Sunnyvale campus would also be in the flood zone with a 3-meter rise.



Citations

Buxton, Brenda. "South San Francisco Bay Shoreline Project." *San Francisco Bay Restoration Authority*, California State Coastal Conservancy · San Francisco Estuary Partnership , May 2019, www.sfbayrestore.org/sites/default/files/2019-05/Item%2015_%20South%20SF%20Shoreline%20Project.pdf.

"E7: San Francisco Bay Shoreline Protection." *Valley Water*, Santa Clara Valley Water District, 2019, www.valleywater.org/project-updates/creek-river-projects/san-francisco-bay-shoreline-protection.

Lee, Wendy, and John Blanchard. "The Scramble for Sunnyvale: Tech Companies in 'Arms Race' for Office Space." *SFChronicle.com*, San Francisco Chronicle, 12 May 2018, www.sfchronicle.com/business/article/The-scramble-for-Sunnyvale-Tech-companies-in-12908684.php.

"Safe, Clean Water and Natural Flood Protection Program." *Valley Water*, Santa Clara Valley Water District, 2019, www.valleywater.org/project-updates/safe-clean-water-and-natural-flood-protection-program.

Strauss, Benjamin, et al. "Surging Seas: Sea Level Rise Analysis." *Surging Seas*, Climate Central, sealevel.climatecentral.org/.

"Why Restore Tidal Marsh?" *Hamilton/Bel Marin Keys Wetlands Restoration*, State of California - State Coastal Conservatory, 2019, hamiltonwetlands.scc.ca.gov/about/why-restore-tidal-marsh/.